

# SPECIFICATIONS & OPTIONS



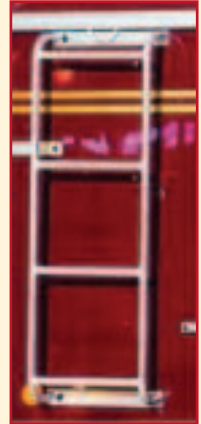
Plexiglass sliding front windows with protection grill.

Side ladder for access to luggage rack \*

Light covers

Double handle + security lock enabling each horse to be secured independantly

Optional side ladder

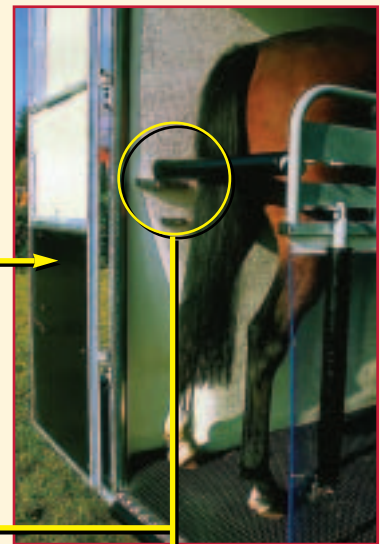


The rear doors ave reinforced with polypropylene for protection

Carriage carrier\*

Removable manger\*

Adjustable bars (depth + height) with security pins enabling the securing of the horse inside the box



Other types of openings



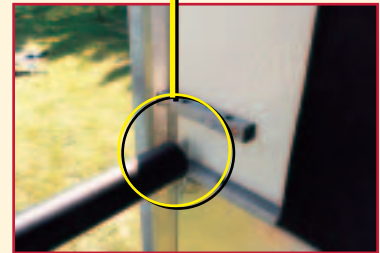
Front ramp\*



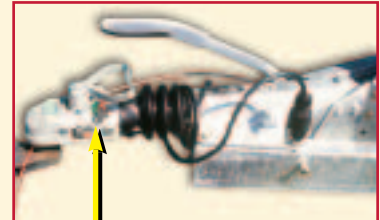
American style opening : 2 doors ans small rear ramp



Automatic jockey wheel



Lockable ball hitch



Hitching rail



Wedges for rear doors



# CHOICE OF 7 COLOURS



Pearl grey



Anthracite grey



Ivory



Blue



Bordeaux



British racing green



White

Personalise your trailer  
(50 colour combinations  
possible in the Provan range e.g.  
Burgundy Roof, Blue sides)

Choice of 7 colours of the range  
with white sides (CLUB).

Personalised trim

VANS FAUTRAS



Club Pearl grey

MODELS  
&  
SIZES

RANGE	Weight empty	Total Weight Permitted (Kg)	Length (metres)		Width (metres)		Height (metres)	
			INT	EXT	INT	EXT	INT	EXT
PROVAN	920	2.000	3,05	4,27	1,63	2,20	2,15	2,55
PROMAX 2	1160	2.500	3,40	4,55	1,80	2,30	2,25	2,68

Factory  
**VANS FAUTRAS**

**DISTRIVAN**

S.A.S. au capital de 230.000 €  
24230 MONTCARET

Tél: 00 33(0)5 53 73 44 00

Fax: 00 33(0)5 53 27 10 55

Web : [www.vans-fautras.com](http://www.vans-fautras.com)

E-mail : [vans-fautras@wanadoo.fr](mailto:vans-fautras@wanadoo.fr)

Official distributor

**Fautras Horse  
Trailers LTD**

**12 Sheringham Close  
Staplecross**

**Robertsbridge TN32 5PZ**

**Tel/Fax: 0044 (0) 1580 830088**

**E-mail: [fautras@horsetrailer-sales.co.uk](mailto:fautras@horsetrailer-sales.co.uk)**

*The photographs shown are not a contractually binding*



# VANS FAUTRAS

## PROVAN AND PROMAX RANGE TWO-HORSE TRAILER



PROVAN CLUB

PROVAN

PROVAN +

PROMAX 2

### A CLASSIC SHAPE BUILT WITH MODERN MATERIALS

- Polyester/carbon fibre body- lightweight and very strong
- Hot-dip galvanised chassis and metallic parts (anti-corrosive)
- Direct traction chassis gives excellent road-holding and easy-steering
- **Quick release breast bar system**
- Automatic reverse
- Galvanised mudguards
- Polypropylene petro-plastic rot-proof (for ease of maintenance and longevity)

#### **FAUTRAS Opening :**

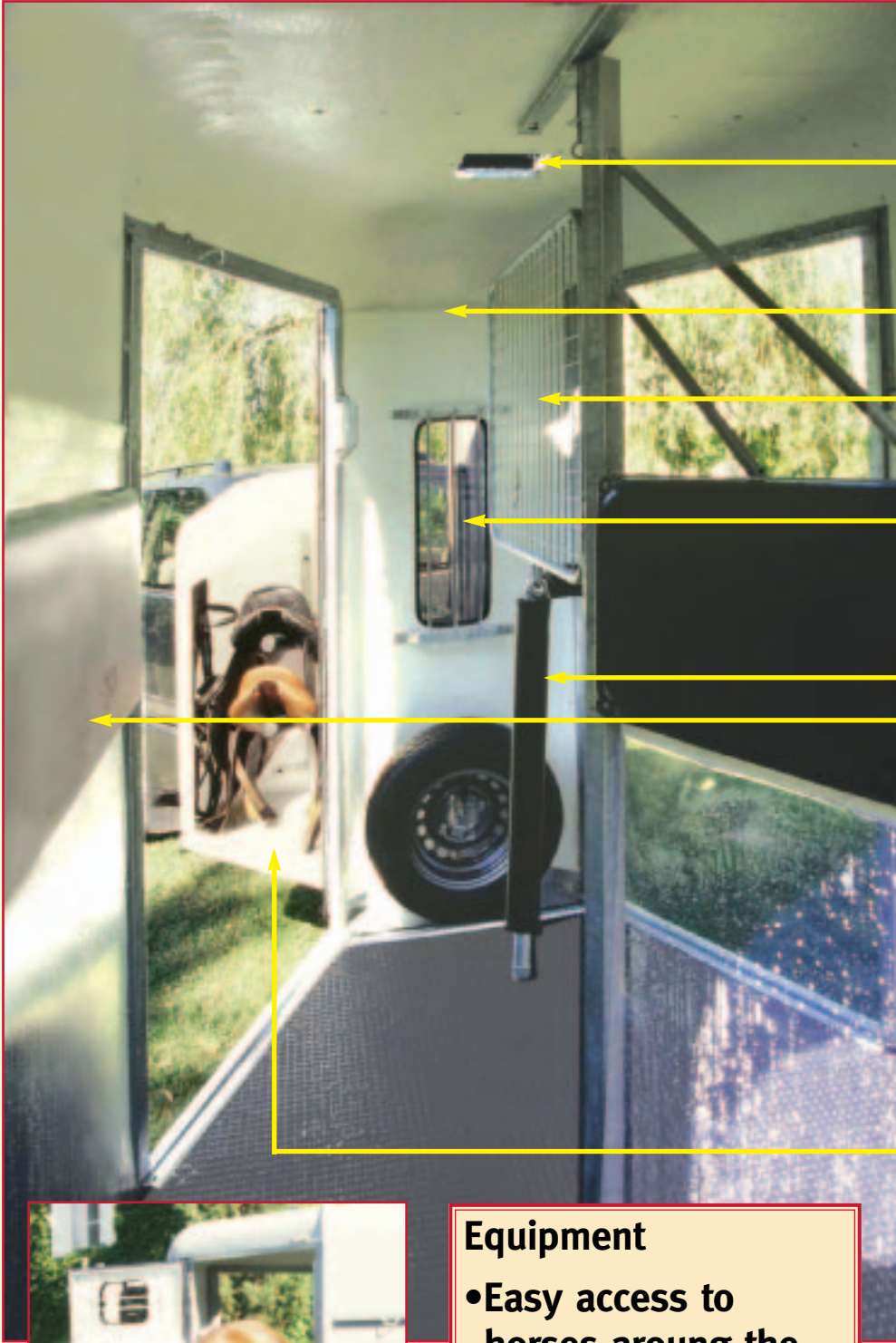
rear door(s) with lowered floor (European patent)  
and **adjustable ventilation shutters** (3 Positions)

- Superior quality anti-slip floor covering
- Removable partition (on a frame allowing single-handed removal)
- One or two front exits with lockable catches (according to model)
- Indirect ventilation
- Four wheels + spare wheel with securing bracket
- Inertia brake
- Maintenance-free independent suspension
- Automatic jockey wheel
- Interior lighting
- Choice of 7 colours
- 50 colour combinations possible
- **Personalised trim**

*Your local dealer*

*Options are indicated by\**

# DIRECT ROOF VENTILATION



Closable roof vent

Front plexiglass window (220 mm x 640 mm) with safety grill giving good light + permitting observation of the horses from the towing vehicle

wall padding for comfortable transportation of the horse

Tack locker with integral feed-bin fitted on to front door



**Equipment**

- Easy access to horses around the headguard
- Good ventilation
- Forward unloading of the horse

**(2 front exits on the Provan +)**



# FRONT EXIT



## PROVAN CLUB

- 1 Front exit with lockable catch
- Padding on sides
- 1 Head grill
- 4 External tie-rings
- 2 Internal tie-rings
- 4 Rounded breast and breach bars
- 1 lockable ball hitch
- Lowered floor (European patent)
- 1 Removable partition 1 central frame giving easy, fast removal
- Choice of 7 colours with white polyethylene side panels

## PROVAN

- 1 Front exit with lockable catch
- 1 Front window (220x640) + protection grill
- Padded sides
- 1 Head grill
- 4 External tie-rings
- 2 Internal tie-rings
- 4 Rounded breast and breach bars
- 4 Protective covers for breast and breach bars
- Lowered floor (European patent)
- 1 Removable partition (1 central frame giving easy, quick removal
- 1 lockable ball hitch
- Choice of 7 colours and personalised trim
- 50 colour combinations possible

## PROMAX 2

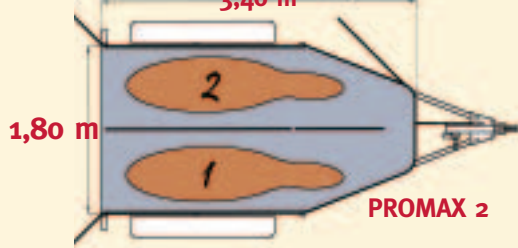
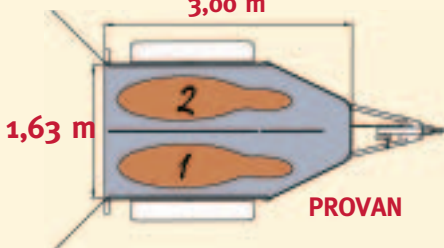
- 2 Front exits with lockable catch
- 1 Front window (220x640) + protection grill
- 1 Head grill
- 4 External tie-rings
- 2 Internal tie-rings
- 4 Rounded breast and breach bars
- 4 Protective covers for breast and breach bars
- Lowered floor (European patent)
- 1 Removable central partition
- 1 lockable ball hitch
- Choice of 7 colours and personalised trim
- 50 colour combinations possible
- Possibility of 2 tack lockers with feed-bins

## PROVAN +

*For standard equipment see price-list.*

Width 1.63 m. door placed on U.K. nearside  
3,00 m

Width 1.80 m. door placed on U.K. nearside  
3,40 m



# FAUTRAS IDEAS



Jean-luc Fautras has perfected a concept for the loading and transportation of horses with has proved itself in three essential points



## 1 REAR DOORS

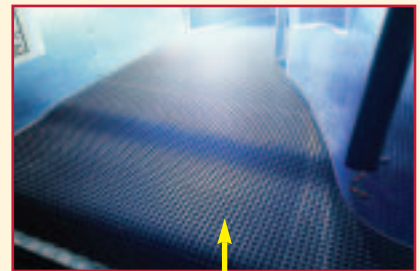
- Doors may be opened fully allowing trailer to reverse flush with the loose-box - not possible with trailers with ramps
- Doors may be fixed half-open allowing the horses to be channelled in when they are being loaded.



Protective edging

## 2 LOWERED FLOOR (EUROPEAN PATENT)

- Reduces the height of access into the trailer
- Facilitates the loading of the horses
- Safe unloading
- The polyethylene floor is rot-proof and indestructible.
- It is covered with a superior quality, easily maintained, anti-sliprubber matting



Non-slip covering

## 3 ADJUSTABLE SLIDING SHUTTERS

- Easy and practical to use
- Adjustable to 3 positions
- Allowing for-variable ventilation

